

Woodstock Gardens Ilford, IG3 9SZ

Edward Chase is delighted to present to the residential lettings market this unique 5/6-bedroom semidetached house in Goodmayes, IG3. This property has been designed to an immaculate standard throughout and benefits from spacious bedrooms, multiple bathrooms, and ample storage. We feel this property would be an ideal selection for growing professional families or professional sharers searching for size, comfort, and convenience. This property has several key features such as:

- Gas central heating - Combination boiler - 5/6 double bedrooms - 2 family sized bathrooms - Ground floor w/c - Pantry - Open plan reception - Designer kitchen including white goods & breakfast bar - Formal dining area - Double glazed windows throughout - Private garden with decking - Rear storage bricked shed - Driveway parking & street parking - Local amenities & schooling options - Property rented unfurnished - Internal storage

To view this property please contact the

- This 5/6 Bedroom Home Is Simply One Of The Best on The Market
- Family Sized Kitchen Including White Goods, Breakfast Bar & a Utility Room
- Ample Storage Throughout, Rear Bricked Shed With a Private Garden & Decking, Side
- Spacious Open Plan Through Lounge With Separate Dining Area Leading into The Rear Kitchen
- Two Master Bathrooms On The First & Second Floor With a Ground Floor W/C
- EPC Rating C, Council Tax Band E, London Borough of Redbridge

Monthly Rental Of £2,499

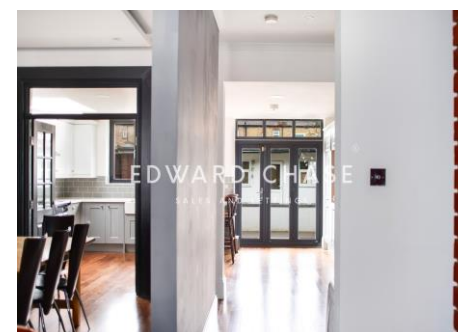
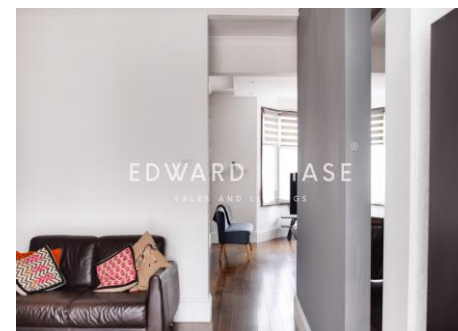
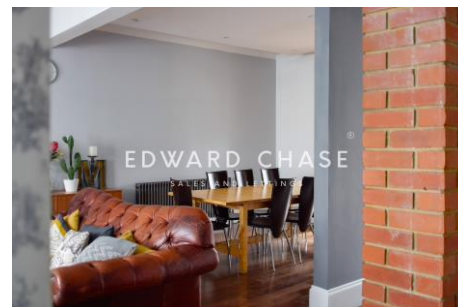
Woodstock Gardens

Ilford, IG3 9SZ

Monthly Rental Of £2,499

Edward Chase is delighted to present to the residential lettings market this unique 5/6-bedroom semidetached house in Goodmayes, IG3. This property has been designed to an immaculate standard throughout and benefits from spacious bedrooms, multiple bathrooms, and ample storage. We feel this property would be an ideal selection for growing professional families or professional sharers searching for size, comfort, and convenience. This property has several key features such as: - Gas central heating - Combination boiler - 5/6 double bedrooms - 2 family sized bathrooms - Ground floor w/c - Pantry - Open plan reception - Designer kitchen including white goods & breakfast bar - Formal dining area - Double glazed windows throughout - Private garden with decking - Rear storage bricked shed - Driveway parking & street parking - Local amenities & schooling options - Property rented unfurnished - Internal storage To view this property please contact the Edward Chase lettings team today. Lettings Edward Chase

estate agents offer a bespoke, professional, ARLA accredited Lettings & Management service. If you would like a free property appraisal to gauge the rental potential of your property or you are considering a buy to let purchase, please feel free to contact Sukhbir Basra, Branch Manager to arrange an appointment. Edward Chase estate agents specialize in Ilford, Redbridge, Seven Kings, Goodmayes, Chadwell Heath, Newbury Park, Barkingside, Chadwell Heath, Barking, Canary Wharf, Docklands, Romford, Chigwell, Dagenham, Newham, Royal Wharf and the surrounding East London vicinity. Edward chase estates agents Lorimer Village, Goodmayes site.



Score	Energy rating	Current	Potential
92+	A		
81-91	B		84 B
69-80	C	74 C	
55-68	D		
39-54	E		
21-38	F		
1-20	G		

MONEY LAUNDERING REGULATIONS 2003

Intending purchasers will be asked to produce identification and proof of financial status when an offer is received. We would ask for your co-operation in order that there will be no delay in agreeing the sale.